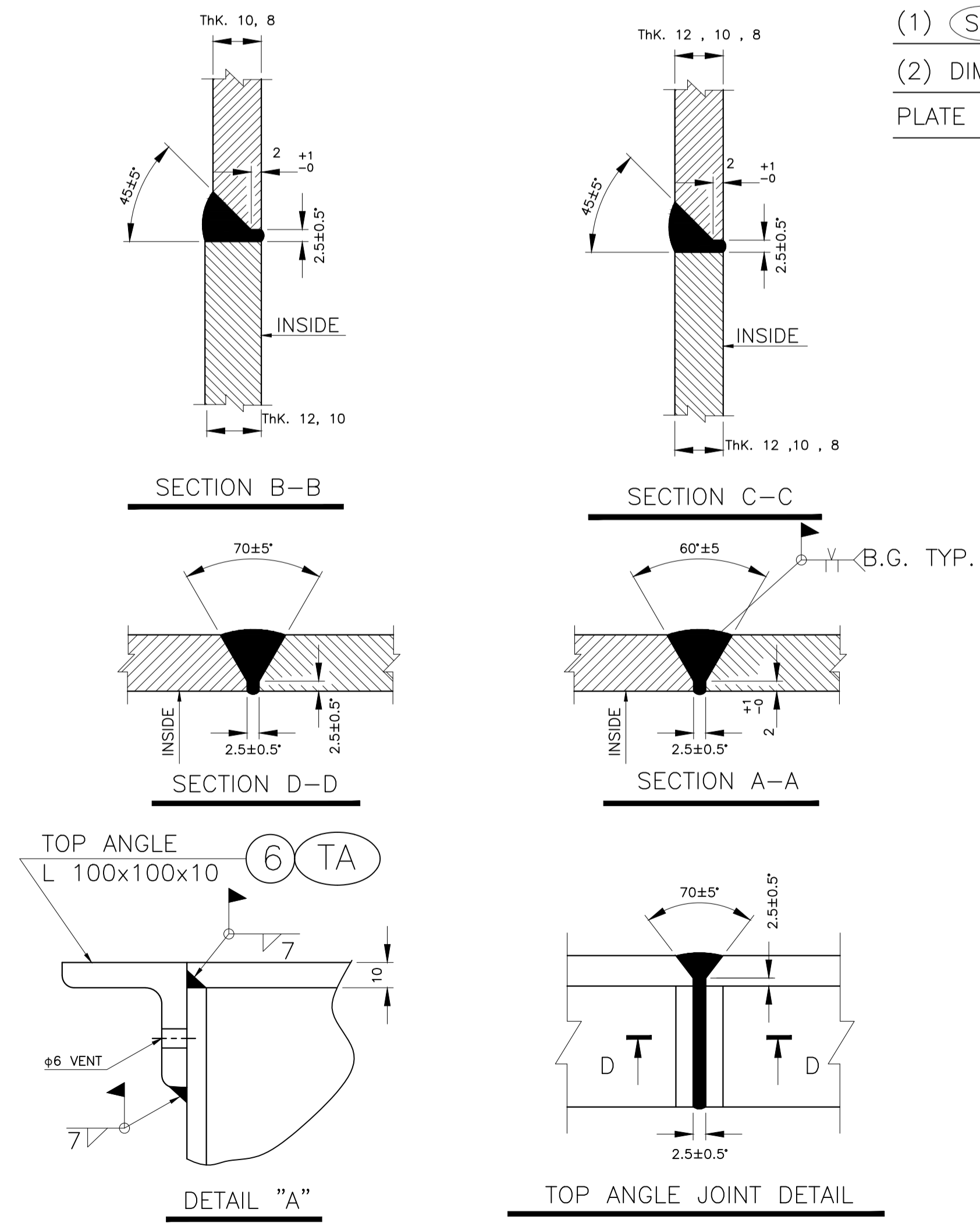
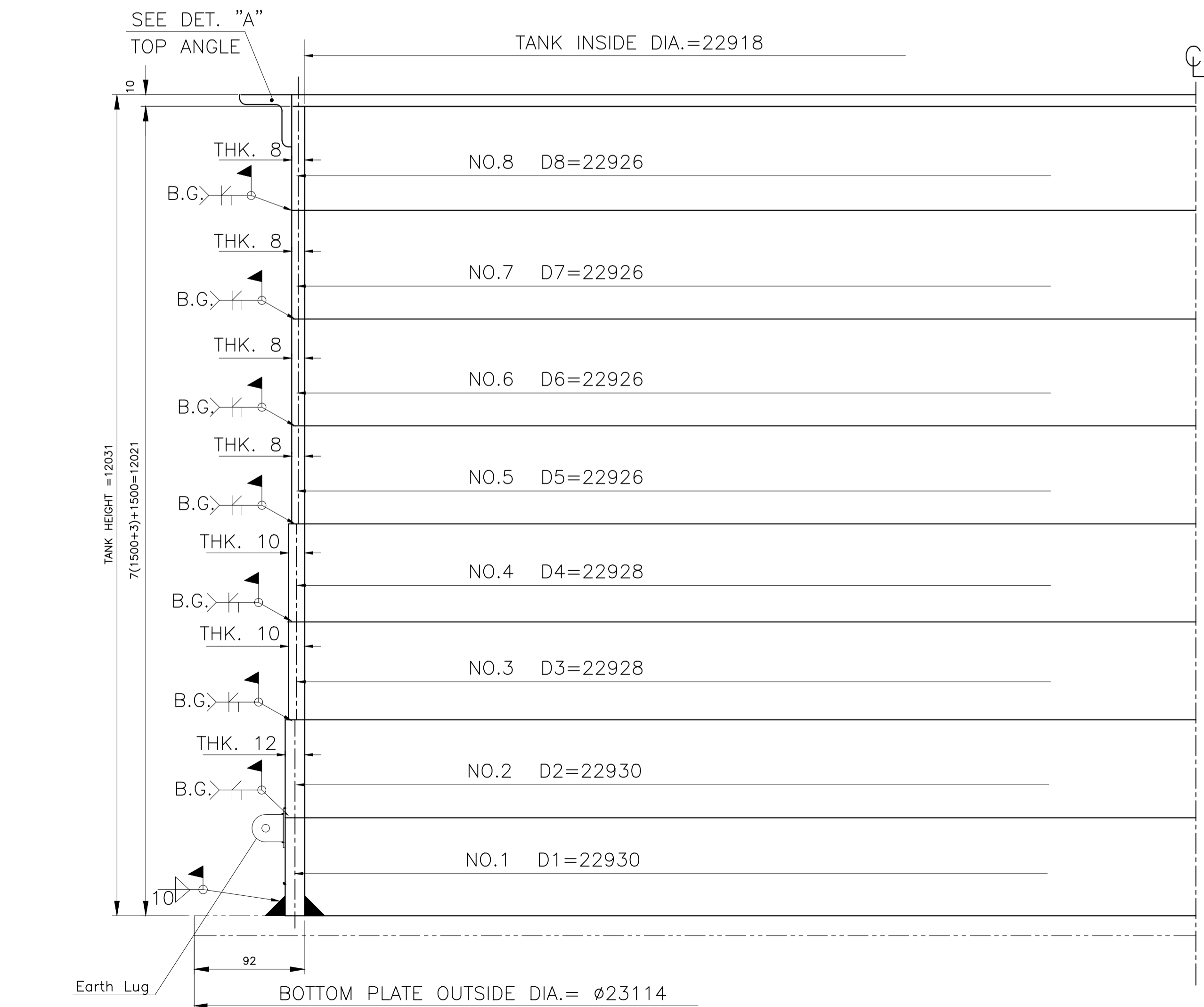


NO.	DESCRIPTION	MATERIAL	DIMENSIONS	NO. OF SET	WEIGHT Kg		REMARKS
					1 PIECE	1 SET	
1	SHELL PLATE	RST37-2	PL.12x1500x6000	12	847.8	10173.6	
2	SHELL PLATE	RST37-2	PL.12x1500x6000	12	847.8	10173.6	
3	SHELL PLATE	RST37-2	PL.10x1500x6000	24	706.5	16956	
4	SHELL PLATE	RST37-2	PL. 8x1500x6000	48	565.2	27129.6	
5	TOP ANGLE	DIN1028	L100x100x10x72300	1	1092	1092	

TOTAL WEIGHT: 65524.8 Kg



NOTE:
 (1) (SP1),.....(SP8) , (TA) ARE ERECTION MARKS.
 (2) DIMENSIONS SHOWN BY Ⓢ IN THE TABLE, ARE THE LENGTH OF 12TH PLATE IN EACH COURSE TO REACH THE DESIRED DIAMETER OF THE TANK.

Drawing Title		Customer	
New Heavy Fuel Oil Storage Tank		Nahavand Cement Co.	
Shell Plates		Drawing No. 1.344.UO.821.01.04	
1401		Scale 1:75	
Designed	08/10	Signature	Rev.
Drawn	08/10	Signature	Rev.
Checked	08/10	Signature	Rev.
Approved	08/10	Signature	Rev.
Project No.	Scale	File Name	Disk No.